



## **Author Guideline**

**Asian Journal of Medical and Health Research (AJMHR)** is a **Monthly** journal which publishes original research articles, review articles, case reports, short communications in the field of medical science, pharmaceutical and Allied sciences. The manuscript would be considered under the specific branches of medical, pharmaceutical and Allied sciences. Those branches are as follows

**Research and Review manuscript is to be submitted for publication in following subjects**

- ☐ Medical sciences
- ☐ Allied sciences
- ☐ Pharmaceutical Science

**AJMHR** allows free unlimited access to abstract and full-text. The journal focuses on rapid publication with facilities of, online research article tracking & Email/SMS alert etc. Manuscripts are accepted for review with the understanding that same work has not been published, that it is not under consideration for publication elsewhere, and that its submission for publication has been approved by all authors and institution where the actual work was carried out.

### **COVER LETTER**

During submission of the article, a cover letter should be included having Authors full address and telephone/fax number.

- The type of article (Research or Review) along with the title and the type of branch under which the article to be published should be mentioned.
- The corresponding author should mention the undertaking that if any animal studies carried was in accordance with their country or institutional ethical committee and also state that the manuscript has not been published elsewhere (except in the form of an abstract or as part of a published lecture or academic thesis).
- Fill the cover letter and send along with your manuscript. Without these forms (Cover letter) your manuscript will not be considered for publication.
- Click here for [cover letter](#).

**Asian Journal of Medical and Health Research publishes** the following manuscript types:

- ☐ Original Research Articles
- ☐ Review Articles
- ☐ Case Studies
- ☐ Short communications



## **ORIGINALRESEARCH ARTICLE**

### **Manuscript preparation**

The manuscript should be prepared in English using “MS Word” with 1 inch margin on all sides (Top, Bottom, Left and Right side) of the page. “Times New Roman” font should be used. The font size should be of 12pt but main Title should be of 16pt bold uppercase, main headings should be of 14pt uppercase, subheadings should be of 12pt bold lowercase. Manuscript should be concisely typewritten in 1.5 spaces in A4 sized sheets. The pages shall be numbers consequently. The length of Review/Science Education article should not exceed 25 manuscript pages to include figures, tables and references. No abbreviations on acronyms shall be used in the titles or Abstract acronyms except for measurements. There shall not be decorative borders anywhere in the text including the title page. These entire MS word document with graphs and illustration pasted in it shall not exceed 2 MB.

### **Sequence for Manuscripts Submission**

1. Article Title
2. Authors and Co-Authors details and their affiliations
3. Abstract (200 to 250 words)
4. Key words (maximum 6)
5. Introduction
6. Materials and Methods
7. Results and Discussion
8. Conclusion
9. Acknowledgement (optional)
10. References
11. Figure
12. Table

### **1)ARTICLE TITLE:**

The title must be as brief as possible, comprehensive and descriptive. It should not be more than 20 words. Title should be of 16pt bold uppercase.

### **2)AUTHORS AND CO-AUTHORS DETAILS AND THEIR AFFILIATIONS**

Each author must provide their full name including their forenames and surname. The Corresponding Author of the manuscript must be marked with an asterisk, and should be listed first. In addition the corresponding author must include Telephone and E-mail address at the



bottom left corner of the title page. If any of the co-authors are from different organizations, their addresses too should be mentioned and indicated using numbers after their names. Maximum 4 authors should be allowed.

### **3)ABSTRACT:**

Should start on a new page after the title page and should present the novelty of the study, the main findings or object of present work, and principle conclusions, not more than 250 words. All the three categories, Review Articles, Original Research papers and Short Communications should have an Abstract.

### **4)KEYWORDS:**

3-6 keywords are to be provided by the authors. These keywords should be typed at the end of the abstract on the same page.

### **5)INTRODUCTION:**

The introduction should not be an extensive literature review although it should provide sufficient background information for the reader to understand and evaluate the results of the present study.

### **6)MATERIALS AND METHODS:**

The section should include sufficient technical information to allow the experiments to be performed. Procedural detail that has been published previously should be referred to by citation.

### **7)RESULTS AND DISCUSSION:**

**Results** should be described as concisely as possible in one of the following ways: text, table(s), or figure(s). The reproducibility and statistical significance of measurements, material or biological data, must be included where relevant.

The **Discussion** should provide an interpretation of the results and their significance with regard to previously published work. There should not be any significant repetition of the experimental procedures or reiteration of the introduction.

### **8)CONCLUSION:**

A short, paragraph summarizing the most important finding(s) of the research is required.

### **9)ACKNOWLEDGMENTS:**

The source of any financial support, gifts, technical assistance and advice received for the work being published must be indicated in the Acknowledgments section.

### **10)REFERENCES:**

Referencing is a standardized way of acknowledging the sources of information and ideas that



you have used in your research work and which allows the sources to be identified. It is important to be consistent when you are referencing.

The Vancouver style of referencing is predominantly used in the medical field and Para medical science. When referencing your work in the Vancouver style, it is very important that you use the right punctuation and that the order of details in the reference is also correct. References should be numbered consecutively in the order in which they are first mentioned in the text (not in alphabetic order). Download a [PowerPoint presentation](#) on reference styles (How to write reference) and using the reference checking facility on the manuscript.

### **For Journal Reference**

Desai BG, Annamalai AR, Divya B, Dinesh BM. Effect of enhancers on permeation kinetics of captopril for transdermal system. Asian J Pharma 2008; 2: 35-37.

### **For Book Reference**

Ancel HC, Allen LV, Popovich NG. Pharmaceutical dosage forms and drug delivery systems. 5<sup>th</sup> ed., New Delhi: Lippincott Williams & Wilkins; 2005: 311-12.

### **For Chapters in Book Reference**

Porter RJ, Meldrum BS. Antiepileptic drugs. In, Katzung BG(ed). Basic and clinical pharmacology. 6<sup>th</sup> ed., Norwalk (CN): Appleton and Lange; 1995; 361-80.

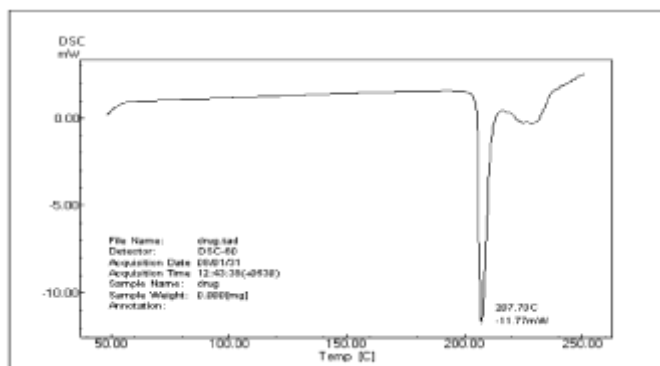
### **Government publications**

Government of India. Ministry of health and family welfare. Indian Pharmacopoeia Vol. I & II. The Controller of Publication, New Delhi; 1996: 762-10.

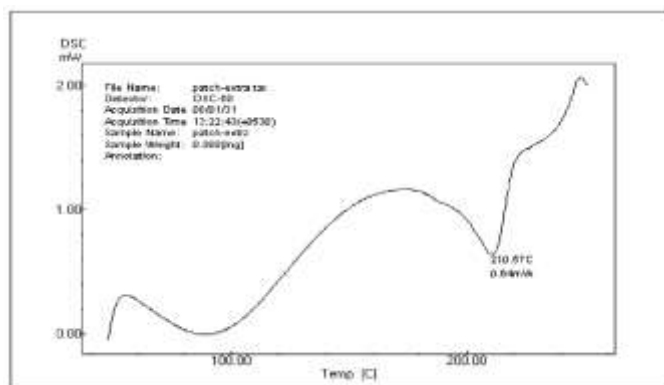
## **11) FIGURE**

- ☐ Figures should be numbered consecutively with Arabic numerals (i.e. Figure 1, 2, 3 etc.).
- ☐ Provide a brief title with each figure.
- ☐ All figures should be cited in the text.
- ☐ File formats accepted are Microsoft Word (figures must be a single page), PowerPoint (figures must be a single page), PNG, JPEG, TIFF, BMP, CDX (ChemDraw) or TGF (ISIS/Draw).

### Sample of Figure.



**Figure 1: D.S.C. image of Timolol maleate. Timolol maleate showed a characteristic exothermic peak at 207.70<sup>0</sup> C, which corresponds to its melting point.**



**Figure 2: D.S.C. image of Optimized Formulation 19 (Timolol maleate + PVA + PVP) Evaluation parameters.**

### **12) TABLES**

- ☐ Please keep the number of tables to a minimum.
- ☐ Tables should be numbered consecutively (Table 1, Table 2 etc) and each table must start on a separate page at the end of the manuscript.
- ☐ Each table must have a title. Each table legend, in paragraph form, should briefly describe the content and define any abbreviations used. If values are cited in a table, the unit of measurement must be stated.
- ☐ Tables should not be ruled.
- ☐ Tables should be created using Microsoft Word table formatting tools (do not use the tab key to form rows and columns of data as tab information is lost when the document is processed).
- ☐ Do not use vertical rules (lines) in tables and use of horizontal lines should be minimum.



□ [sample of tables.](#)

**Table 1. Evaluation Parameters of Tablets.**

Parameter	Formulations		
	F3	F6	F9
1) Thickness (mm)	6.15	6.12	6.12
2) Diameter (mm)	12.10	12.10	12.10
3) Weight variation	2.05	2.60	1.75
4) Hardness (kg/cm <sup>2</sup> )	4.5	4.5	4.0
5) Disintegration Time (min)	12.10	10	8
6) Friability (%)	0.78	0.81	0.88
7) Content Uniformity	93.70±1.50	91.86±4.5	95.57±3.36
8) Cum.% Drug Released	73.05	61.65	81.11

**Table 2 In-vitro Dissolution Parameters of all Formulations**

Formulation	Method	Cum. % Drug Released	Cum. % Drug Retained	Dissolution Rate (g <sup>1/3</sup> /min)	Dissolution Efficiency DE <sup>60</sup> %	T <sup>50</sup> (min)	T <sup>90</sup> (min)
F1	Common Solvent	41.08	58.92	0.79 x 10 <sup>-3</sup>	31.66	44	101
F2		77.58	22.42	1.56 x 10 <sup>-3</sup>	56.66	47	101
F3		89.12	10.88	2.15 x 10 <sup>-3</sup>	75.00	40	97
F4		38.78	61.22	0.65 x 10 <sup>-3</sup>	28.33	47	98
F5		66.17	33.83	1.28 x 10 <sup>-3</sup>	48.33	47	103
F6		86.78	13.22	1.93 x 10 <sup>-3</sup>	68.33	40	103
F7		47.9	52.10	0.83 x 10 <sup>-3</sup>	36.66	48	105
F8		82.21	17.79	1.85 x 10 <sup>-3</sup>	66.66	41	106
F9		96.01	3.93	2.61 x 10 <sup>-3</sup>	86.66	37	96
F1	Physical Mixture Basket	38.71	61.29	0.61 x 10 <sup>-3</sup>	23.33	54	104
F2		61.59	38.41	1.16 x 10 <sup>-3</sup>	43.33	47	102
F3		82.16	17.84	1.70 x 10 <sup>-3</sup>	61.66	45	101
F4		34.13	65.87	0.50 x 10 <sup>-3</sup>	20.00	62	107
F5		59.29	40.71	1.05 x 10 <sup>-3</sup>	41.66	50	105
F6		79.85	20.15	1.63 x 10 <sup>-3</sup>	56.66	47	103
F7		43.32	56.68	0.70 x 10 <sup>-3</sup>	30.00	47	104
F8		68.48	31.52	1.42 x 10 <sup>-3</sup>	51.66	45	100
F9		86.73	13.27	1.91 x 10 <sup>-3</sup>	65.00	45	102



## **REVIEW ARTICLES**

Review articles should not be more than 25 pages and contain comprehensive coverage of relevant literature. Review articles should preferably be written by scientists who have in-depth knowledge of the topic. All format requirements are similar to those applicable to Research papers. Review articles need not to be divided into sections such as Materials and methods, and Results and discussion, but should definitely have an abstract and introduction.

## **SHORT COMMUNICATIONS**

The research and technical communications section of this journal (maximum 3,000 words) is open to interesting results worthy of publication without requiring extensive introduction and discussion. This section should be organized as follows: Abstract, Introduction, Materials and methods, Results and discussion (combined). Not more than 10 references should be provided. Tables, figures and references are to be arranged in the same way as for research papers. Brevity of presentation is essential for this section.

## **COPYRIGHT**

Submission of the manuscript represent that the manuscript has not been published previously and is not considered for publication elsewhere. Authors would be required to sign a CTA form (Copy Right Transfer Agreement) once the manuscript is accepted which would be sent to the corresponding author's email. The corresponding author can download the form and after getting authors and co-authors signature it can be send as an attachment file after scanning to the journal or by post/courier along with the publication charges.

[Download Copyright Form.](#)

## **ETHICAL MATTERS**

Authors involving in the usage of experimental animals and human subjects in their research article should seek approval from the appropriate Ethical committee in accordance with "Principles of Laboratory Animal Care". The Method section of the manuscript should include a statement to prove that the investigation was approved and that informed consent was obtained

## **GALLEY PROOFS**

Galley proofs would be sent unless indicated otherwise to the corresponding author. It is the responsibility of the corresponding author to ensure that the galley proof are to be returned without delay with correction (if any). The authors are responsible for the contents appeared in their published manuscripts.



## PROCESSING FEES FOR PUBLICATION

Manuscripts submitted to AJMHR are assumed to be submitted under the Open Access publishing model. There is no charge for the processing of papers but author(s) of accepted paper **is required** to pay a publication charge of **1000 Rupees for** Indian authors & **\$ 50 USD** for international authors (Cost towards processing, maintenance of paper in secured data storage system, databases; to meet various overhead expenses like employees charges etc.). Maximum 4 authors should be allowed. Published papers appear electronically and are freely available from our website.

Article category	Authors from Overseas	Authors from India
Research article	\$50 USD	Rs 1000
Review Article	\$50 USD	Rs 1000
Case reports	\$50USD	Rs 1000
Short Communication	\$50 USD	Rs 1000
Fast Track publication	\$75 USD	Rs 1500
More than 4 authors	\$10 USD	Rs 200

### Conflict of Interest statement

It must be declared by authors.